

DESIGNING FOR BROADCAST & FILM



全自动
3D 摄影系统

Bi²VISION
Bionics & Binocular Vision

产品特长

全自动

短时间内可自动完成复杂的3D摄像机镜头的校正。其他的3D拍摄系统需要专业技术人员对两台摄像机进行手动调节，需耗时30分至3小时，且一经更换摄像机或拍摄地点便需重新调节。BinoQ-P系列每次更换摄像机或拍摄地点后只需要1分钟进行自动初期设置后，就可以在拍摄中进行实时调节。

低成本

除必须的设备外，拍摄3D和2D的成本基本相同，无需额外增加3D相关人员。

易操作

由于可自动调节视差和基线长，2D摄影师可直接拍摄3D影像，无需培训。

高品质

相对于靠后处理来达到3D效果的影像而言，BinoQ-P系列是靠马达对摄像机的位置进行调节，所以图像的画质不会降低。此外，它还可以实时自动矫正摄像机镜头位置以消除因摄像机重心变动或焦距变动对3D效果产生的影响。

人性化

伴随着摄像中的调焦，两台摄像机之间的距离也会自动变化，以达到适合人眼的最佳3D效果。并通过对两台摄像机的7轴控制，使其自动保持人眼标准辐辏关系，减轻3D疲劳。

泛用性

通过P3，P4和P5的组合使用(超近距离用P5, 近距离用P4，中远距离用P3)，可满足景深0.2米至500米的大范围3D拍摄。

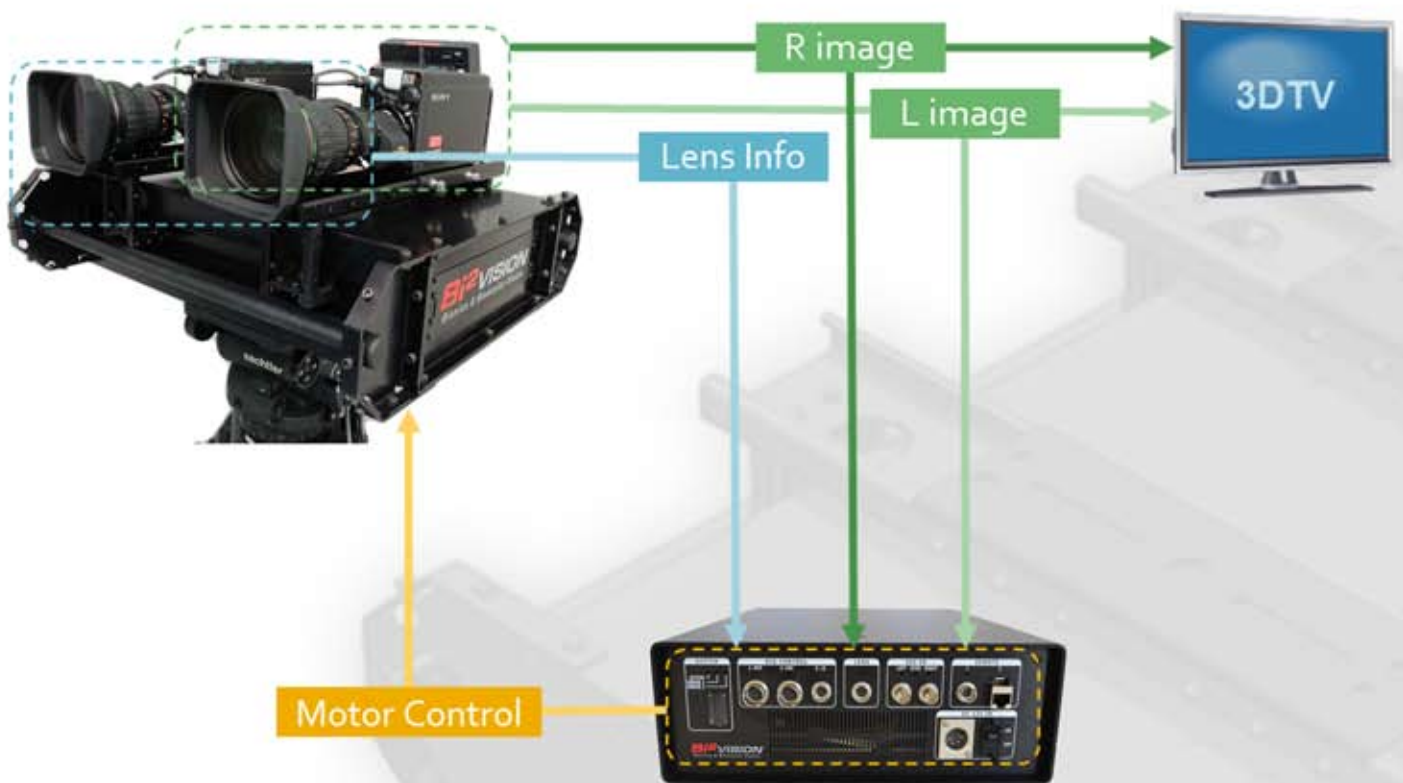
全自动控制原理

基线长自动调节理论

在满足3D安全基准的前提下，根据被摄像物体，我们可以计算出能够获得最佳立体效果的3D影像的基线长。根据该理论开发的基线长自动控制系统可以在摄影师调焦过程中自动调节两台摄像机的距离，得到远处物体的最佳3D影像。

标准辐辏模型

把人眼观看物体时的相对位置关系原理(标准辐辏原理)应用于摄像机姿态调节控制系统上，使得双眼摄像机随时保持标准辐辏关系。



*Product specifications described are subject to change without notice.

© 2013 BI2-Vision Co., Ltd.

Parallel Type

P3 RIG



P3-70



P3-35

Specifications*

General		
Model	P3-RIG3500	P3-RIG7000
Dimensions	W650×H210×D610(mm)	W1000×H210×D640(mm)
Weight	25kg	35kg
INTERAXIAL RANGE	200 ~ 350mm	250 ~ 700mm
Active Range (electromotive)	CONVERGENCE RANGE	-2°~ +6°
	ROLL RANGE	-2° ~ + 2° (×2 axis)
	PITCH RANGE	-2° ~ + 2°(×2 axis)
Camera/Lens Payload	Less than 10kg for each Camera Stage	
Input-Output Terminal		
RIG CONTROL	20pin ×2 ,10pin ×1	

* 本产品为订货生产方式，具体规格请订货时确认。

*Product specifications described are subject to change without notice.

© 2013 Bi2-Vision Co., Ltd.

BinoQ-PSeries

P3 Control Box



Specifications*

General	
Model	P3-CBX1000
Dimensions	W282×H102×D305(mm)
Weight	5kg
Power Consumption	100W
Input-Output	
HD-SDI Input Signals	BNC × 2
HD-SDI Video Formats	1920 × 1080i (60/59.54/50) 1920 × 1080p (30/29.97/25/24)
REMOTE	RS422, 10pin × 2
DC IN	DC12V, XLR 4pin × 1
LENS CONTROL	10pin × 1
RIG CONTROL	20pin × 2 ,10pin × 1

* 本产品为订货生产方式，具体规格请订货时确认。

*Product specifications described are subject to change without notice.

© 2013 Bi2-Vision Co., Ltd.

P3 特点

平形式主动3D Rig系统 BinoQ-P3

可通过缩放操作自动调整最合适基线长

自动修正摄像机间的相对姿势

对应左右摄像机的同步操作

具有基线长20~35cm (BinoQ-P3-35) 和25~70cm两种机型 (BinoQ-P3-70)

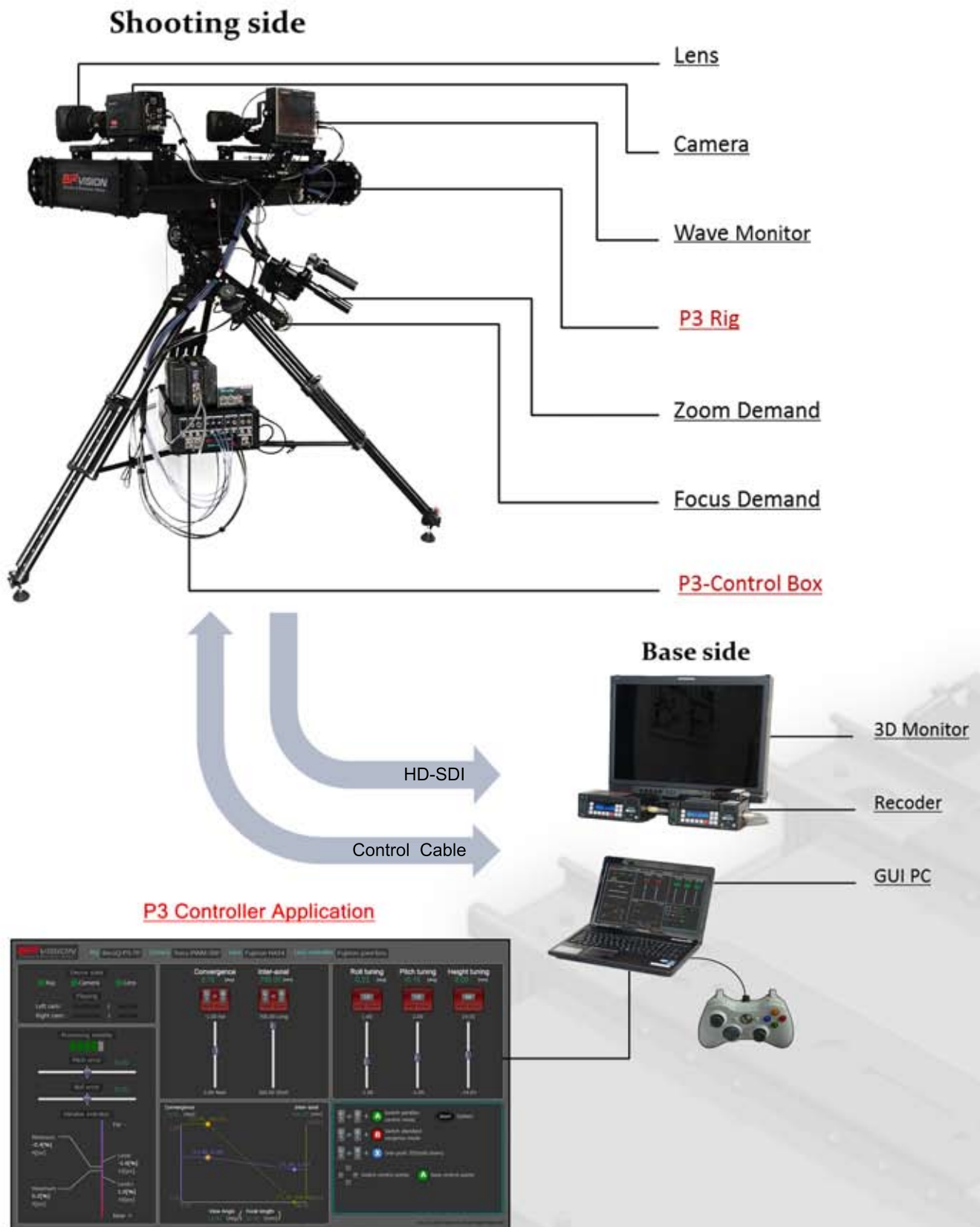
P3 Controller Application



*Product specifications described are subject to change without notice.

© 2013 Bi2-Vision Co., Ltd.

P3系统构成



*Product specifications described are subject to change without notice.

Beamsplitter Type

P4 RIG



Specifications*

General	
Model	P4-RIG1000
Dimensions	W452×H586×D857(mm)
Weight	26kg
Camera/Lens Payload	Less than 6kg for each Camera Stage
Active Range (electromotive)	INTERAXIAL RANGE -2.5 ~ +102.5mm
	CONVERGENCE RANGE -0.5° ~ +1.5°
	ROLL RANGE -1.75° ~ +1.75°
	PITCH RANGE -2° ~ +2°
	HEIGHT RANGE -3 ~ +3mm
Input-Output Terminal	
RIG CONTROL	20pin ×1, 10pin ×1

* 本产品为订货生产方式，具体规格请订货时确认。

*Product specifications described are subject to change without notice.

© 2013 Bi2-Vision Co., Ltd.

BinoQ-PSeries

P4 Control Box



Specifications*

General	
Model	P4-CBX1000
Dimensions	W282×H102×D305(mm)
Weight	5kg
Power Consumption	100W
Input-Output	
HD-SDI Input Signals	BNC × 2
HD-SDI Video Formats	1920 × 1080i (60/59.54/50) 1920 × 1080p (30/29.97/25/24)
REMOTE	RS422, 10pin × 1
DC IN	DC12V, XLR 4pin × 1
LENS CONTROL	10pin × 1
RIG CONTROL	20pin × 1 ,10pin × 1

* 本产品为订货生产方式，具体规格请订货时确认。

*Product specifications described are subject to change without notice.

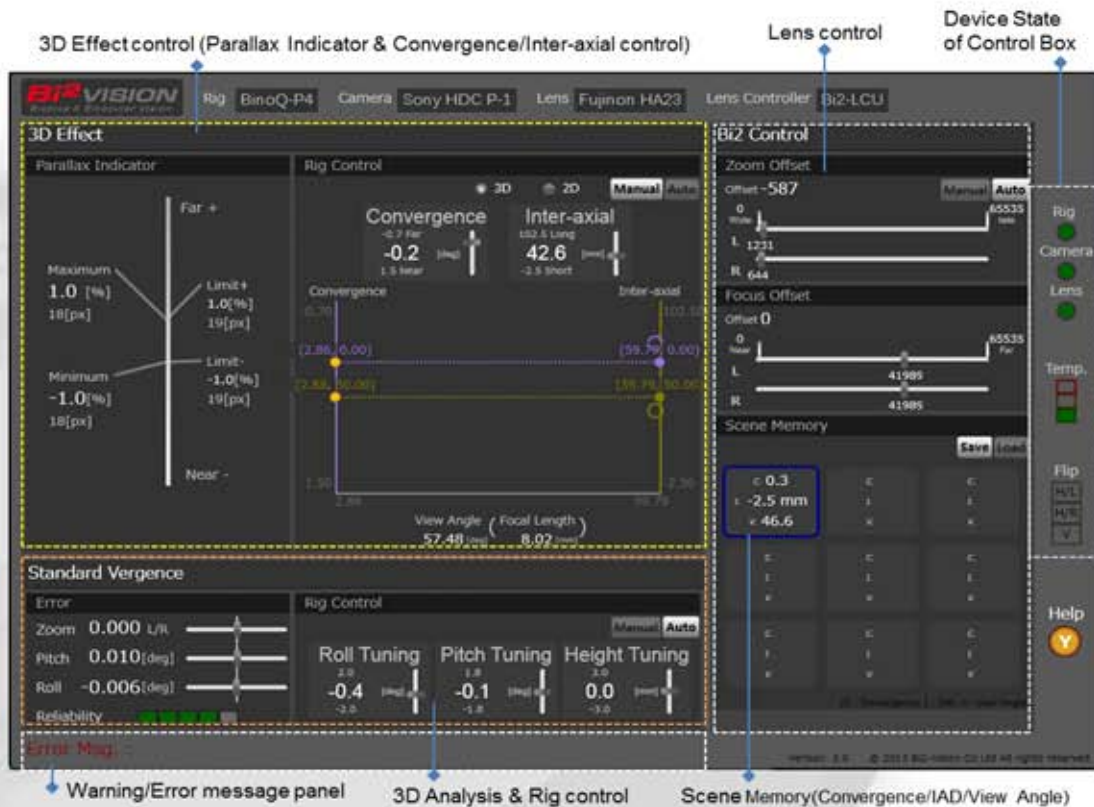
© 2013 Bi2-Vision Co., Ltd.

P4 特点

通用型半透镜式3D摄影架系统

- 几何学失真与光学误差的全自动校正
- 为了舒适的3D观看与创作而做的视差调整
- 两个镜头的光学和大小失真的自动校正
- 快速的场景记录

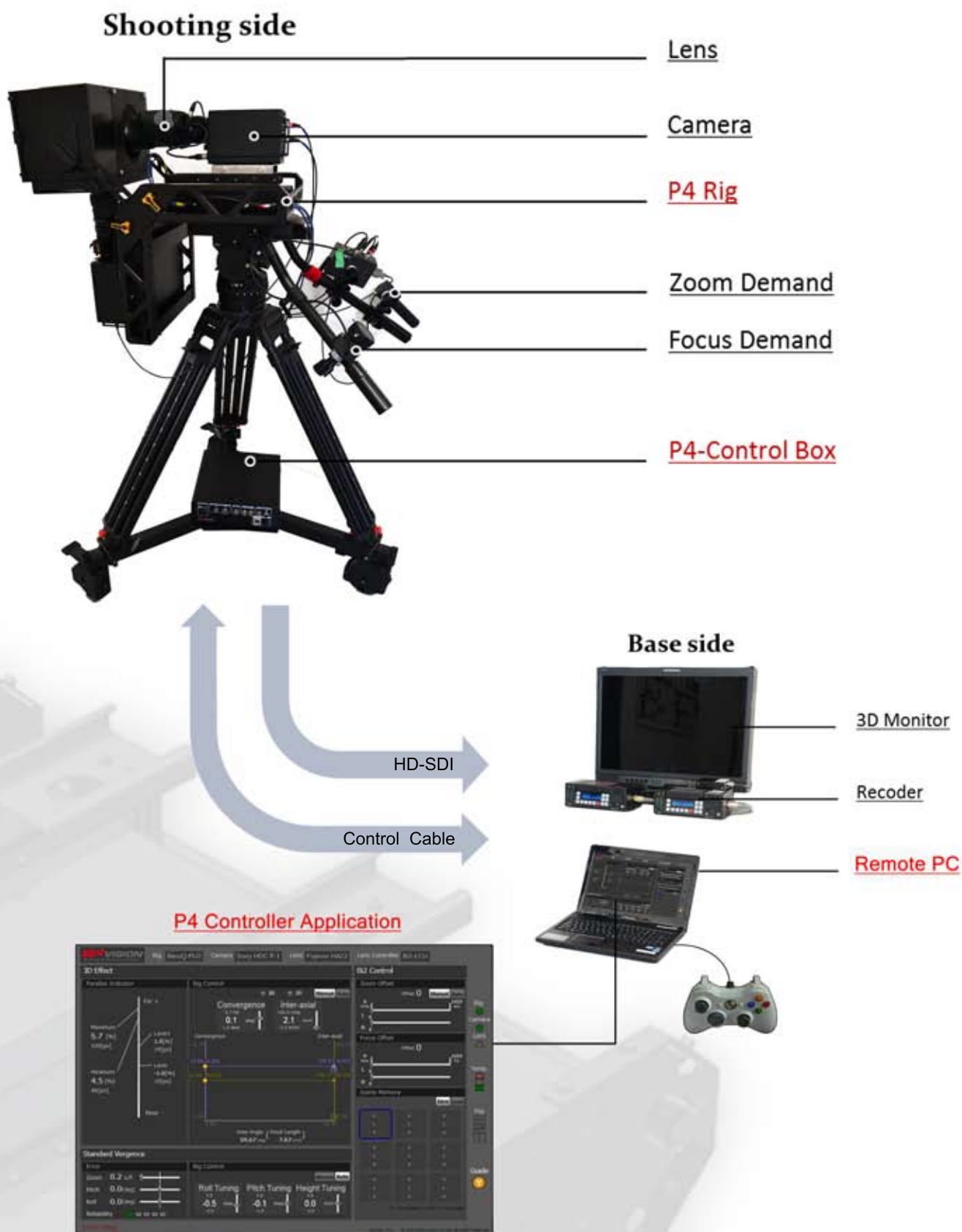
P4 Controller Application



*Product specifications described are subject to change without notice.

© 2013 Bi2-Vision Co., Ltd.

P4系统构成



*Product specifications described are subject to change without notice.

Beamsplitter Type

P5C RIG



Specifications*

General	
Model	P5-RIGCEB5
Dimensions	W360×H290×D650(mm)
Weight	12kg(with cameras)
Active Range (electromotive)	INTERAXIAL RANGE 0 ~ 70mm CONVERGENCE RANGE -1° ~ +6° ROLL RANGE -3° ~ +3° PITCH RANGE -3° ~ +3°
View Angle	2.92° ~ 54.1°(H)
Focal Length/Zoom Range	4.7~94mm/20×(optical)
M.O.D (W)/M.O.D(W~T)	1cm /100cm
HD-SDI Video Formats	1920×1080i (59.54/50)
Input-Output	
HD-SDI Output Signals	BNC×2
REMOTE	RS422, 10pin×1
DC IN	DC12V, XLR 4pin×1

* 本产品为订货生产方式，具体规格请订货时确认。

*Product specifications described are subject to change without notice.

© 2013 Bi2-Vision Co., Ltd.

P5C 系统构成

MONITOR & AUDIO

3D Monitor & Recorder



Microphone



Camera (with zoom lens)



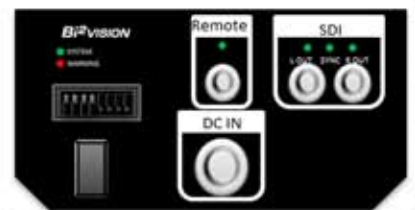
Camera Control Unit



Rig Controller

RIG INSIDE

BACK PANEL



RIG CONTROL PANEL



IAD- OK IAD+ One Push 3D Mode
One Push 2D Mode
Center Fixed Mode

CAMERA CONTROLLER



*Product specifications described are subject to change without notice.

© 2013 Bi2-Vision Co., Ltd.

Beamsplitter Type

P5S RIG



Specifications*

General	
Model	P5-RIGSEB5
Dimensions	W350×H362×D655(mm)
Weight	14kg(with cameras)
Consumption	80W
Camera/Lens Payload	Less than 2.5kg for each Camera Stage
Active Range (electromotive)	INTERAXIAL RANGE 0 ~ 70mm
	CONVERGENCE RANGE -1° ~ +6°
	ROLL RANGE -3° ~ +3°
	PITCH RANGE -3° ~ +3°
Lens Size	Less than D54×L153(mm)
Lens View Angle	Less than 54.1°(H)
HD-SDI Video Formats	1920×1080i (60/59.54/50)
	1920×1080p (30/29.97/25/24)
Input-Output	
HD-SDI Output Signals	BNC×2
REMOTE	RS422, 10pin×1
DC IN	DC12V, XLR 4pin×1

* 本产品为订货生产方式，具体规格请订货时确认。

*Product specifications described are subject to change without notice.

© 2013 Bi2-Vision Co., Ltd.

P5S 系统构成



*Product specifications described are subject to change without notice.

拍摄实例



Bi²VISION
Bionics & Binocular Vision

地址: 226-8510
日本神奈川県横浜市緑区长津田町4259-3
东工大横浜 Venture Plaza W-401
电话: +81-45-985-4561
主页: <http://www.bi2vision.com>